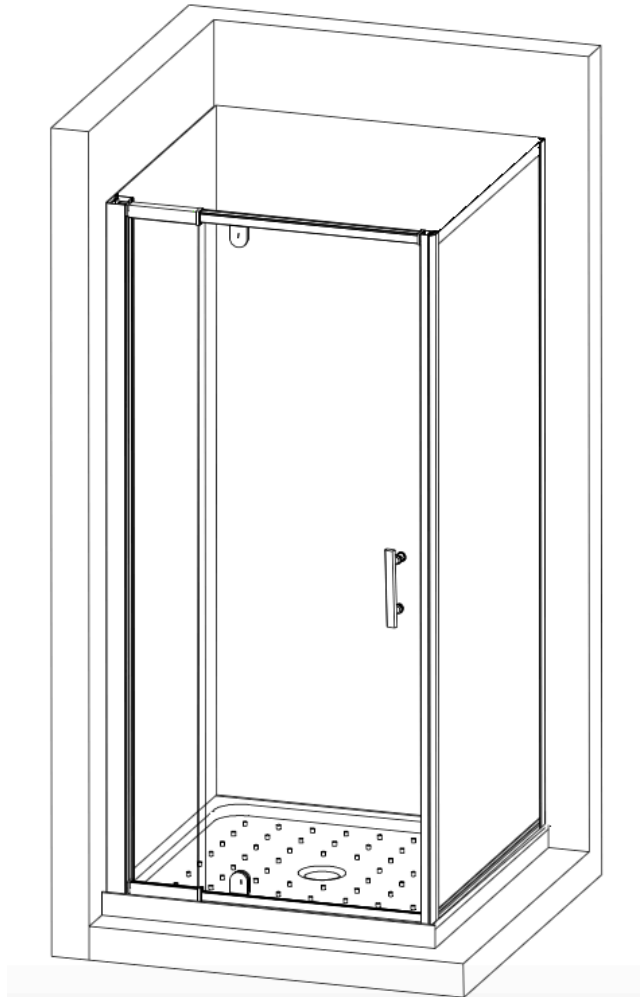


# Lennox Shower Cape Series

## INSTALLATION GUIDE



Model: RGM 750-1200



The Lennox<sup>™</sup>  
Bathroom

Auckland Ph:09 2710168      Hamilton Ph:07 8477722

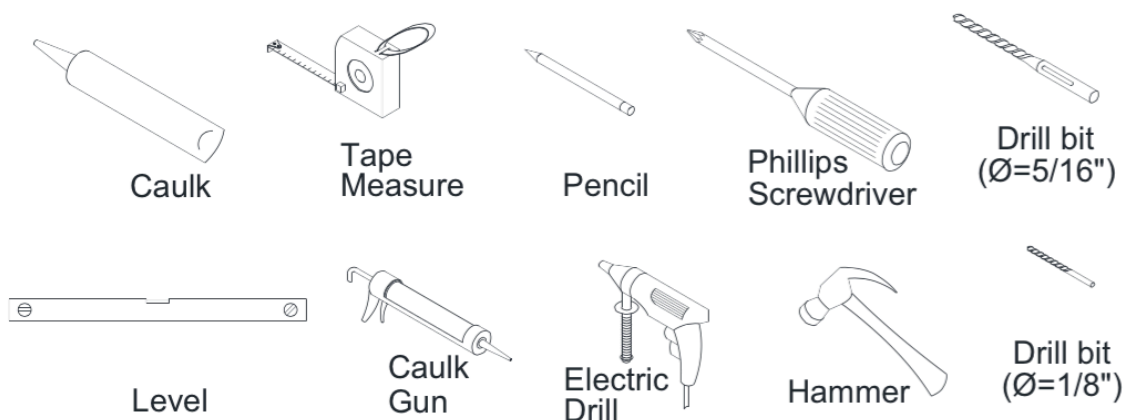
Christchurch Ph:03 3488885      Dunedin Ph:03 4775885

Online Order: [www.lennoxbathroom.nz](http://www.lennoxbathroom.nz)

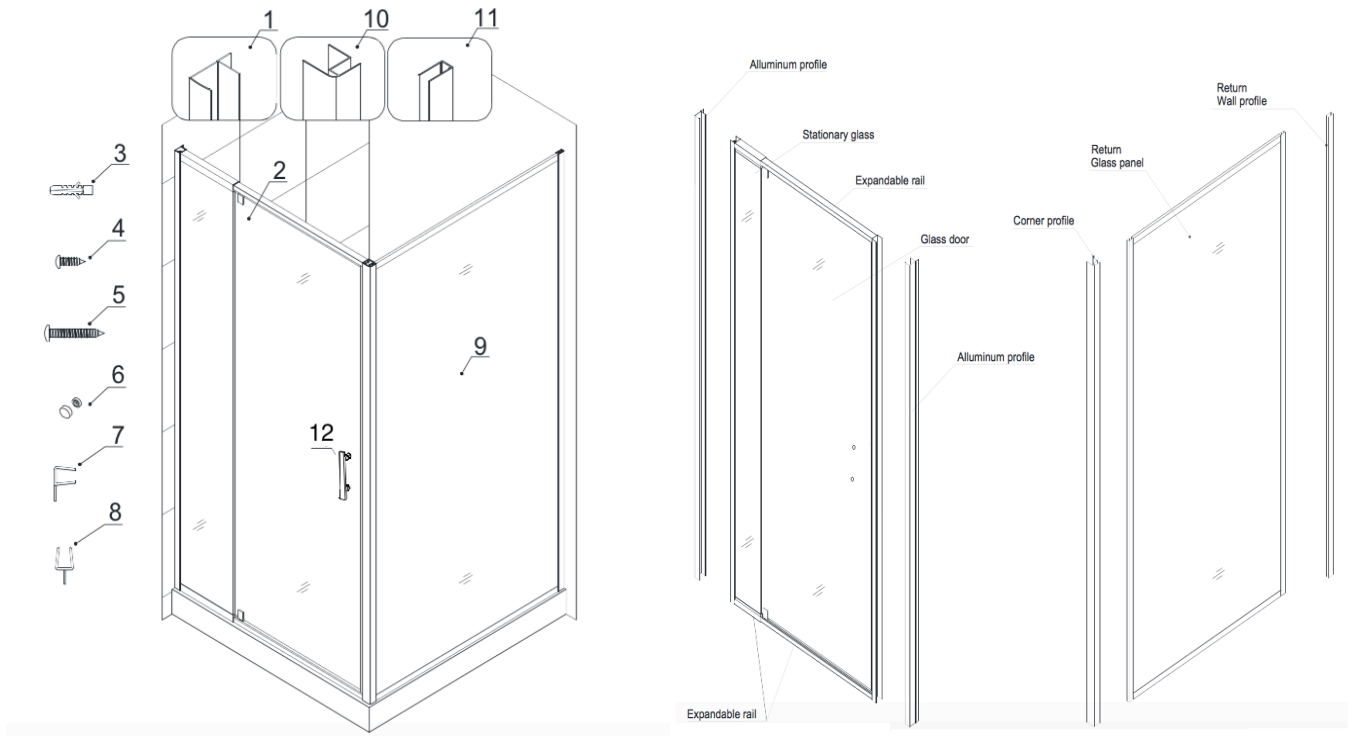
## Preparation

1. After opening all boxes and packages, read this introduction carefully. Check that all of the needed parts are included in the package by marking all the components on the “Detailed Diagram of Shower Door Components”. Examine boxes and packages for shipping damage. If the unit has been damaged, has a finishing defect, or has missing parts, please contact us within 5 business days of the delivery date. Please note that **The Lennox™ will not replace any damaged products or missing parts free of charge after 5 business days or if the product has been installed.** Feel free to contact The Lennox™ if you have any questions.
2. Please ensure that prior to the installation surface is leveled and solid and will be able to support the total weight of the unit. Also make sure the walls are at right angles. Irregular installation surface level or improper angle of side walls will result in serious problems for your installation. Please, note that some adjustments and drilling might be necessary during the installation process.
3. This unit has to be installed against a finished floor and walls.

### Tools Required



## Packing List



01	Wall profile	2pcs*	8	Bottom anti-water strip	1pcs
02	Door Assembly	1set	9	Return glass panel	1pcs
03	Wall anchor	8pc	10	Corner profile	1pcs
04	Round head screws ST4.2X10	6pc	11	Return wall profile	1pc
05	Round head screws ST4.2X40	6pcs	12	Handle	1pc
06	Decorative Cover	6pcs	13	Wall Liner	1pc
07	Flanged anti-water strip	1pc	14	Acrylic shower tray	1pc

\* - For shower enclosure please use only one wall profile.

**NOTE:** Installation of Lennox Products MUST BE carried out by a QUALIFIED TRADESPERSON.

Unpack your unit carefully and inspect it. Lay it out and identify all parts using parts diagram and part list in your manual as a reference. Before discarding the carton, check for small hardware bags that tend to fall to the bottom of the box. If any parts are damaged or missing, please contact The Lennox<sup>TM</sup> for replacement.

**NOTE:** Retain these installation instructions for future reference.

Wall liner (13) and Acrylic shower tray (14) are packing separate. Please refer to lennox shower tray and liner installation guide.

# Shower Enclosure Installation

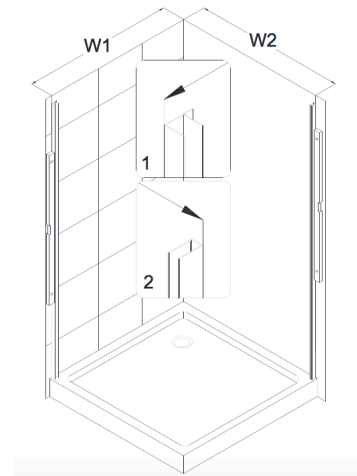
**NOTE: The installation of this shower enclosure requires two installers.**

**NOTE: The shower enclosure can be installed on the shower base or custom threshold.**

1. The width of the shower enclosure is adjustable and can be adjusted to the size of your shower base or custom threshold.  
Mark position of the **Wall profile (01)** and the **Return wall profile (11)** on the wall according to the model size and dimensions provided in the size table.

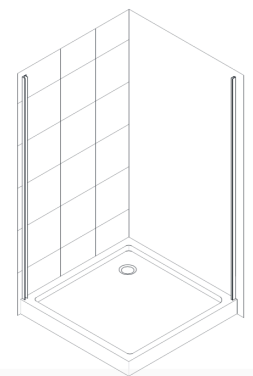
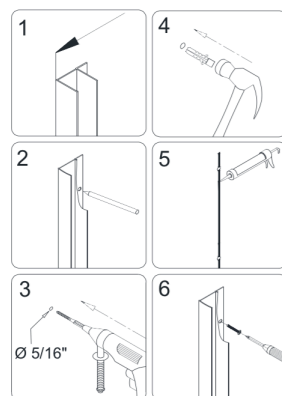
Place the **Wall profile** and the **Return wall profile** onto the Shower base or threshold against the finished wall and level it vertically.

Model No.	W1/W2
RGM750A/B	690
RGM800A/B	740
RGM900A/B	840
RGM1000A/B	940
RGM1100A/B	1040
RGM1200A/B	1140



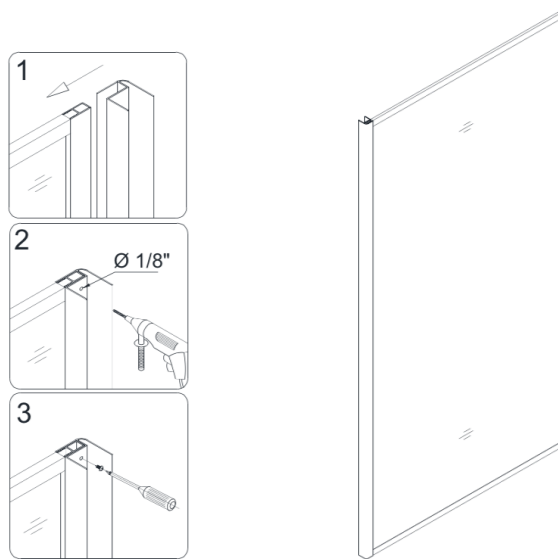
2. Trace the drilling holes on the wall through the predrilled holes in the **Wall profile (01)**. Drill the holes on the wall using a **Ø 5/16 drill bit** and insert the **Wall anchors (03)**.

Apply a bead of silicone to the wall along the drilled holes and around the holes. Attach the **Wall profile** to the wall with the **Round head screws ST4.2×40 (05)**.

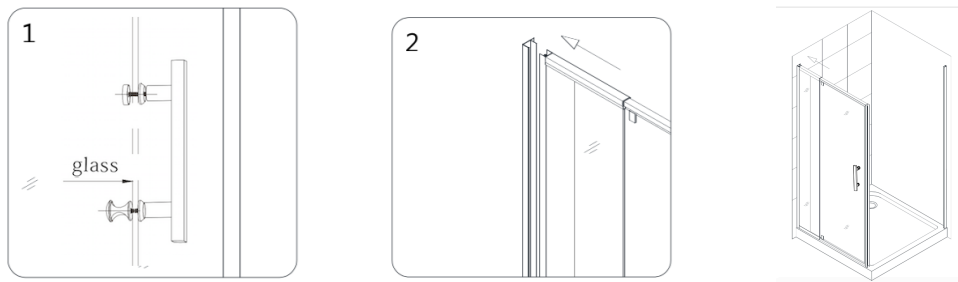


3. Slide the **Corner profile (10)** over the aluminum vertical edge of the **Return glass panel (09)**. Drill the holes into the aluminum profile on the **Return glass panel** using an **Ø 1/8 drill bit** through the predrilled holes in the **Corner profile**.

Secure the **Corner profile** to the **Return glass panel** with the **Round head screws ST4.2×10 (04)**. Set this **Return glass panel** assembly aside.

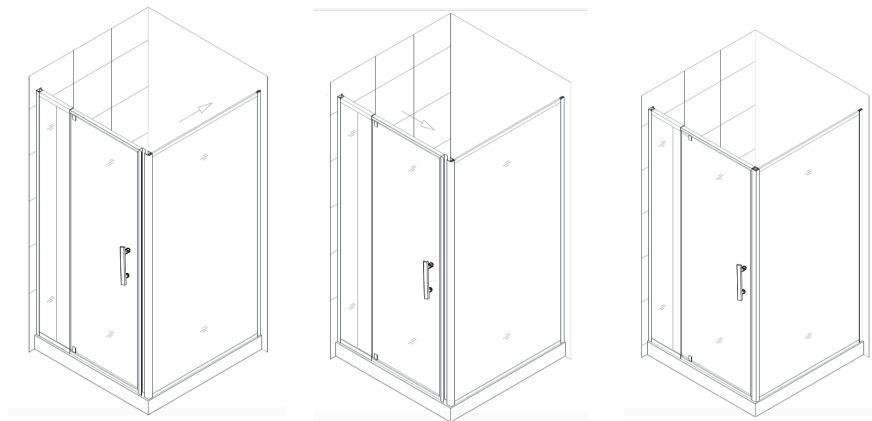


4. Install the **Handle (12)** onto the **Door assembly (02)**. Move the **Door assembly** onto the Shower base and slide the Stationary glass side into the **Wall profile (01)**.

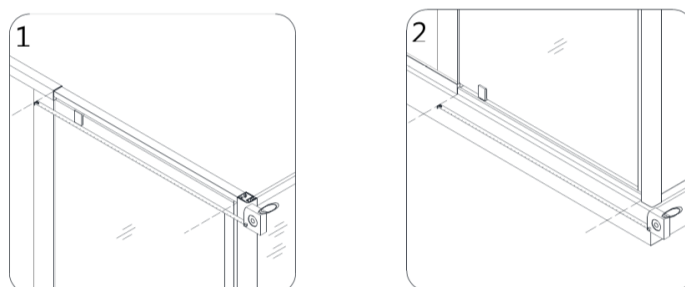


5. Slide the **Return glass panel (09)** assembly into the groove of the **Return wall profile (11)**.

Extend width of the **Door assembly (02)** by stretching the top and bottom Expanding rails toward the **Corner profile (10)**. Insert Glass door side into the **Corner profile**.



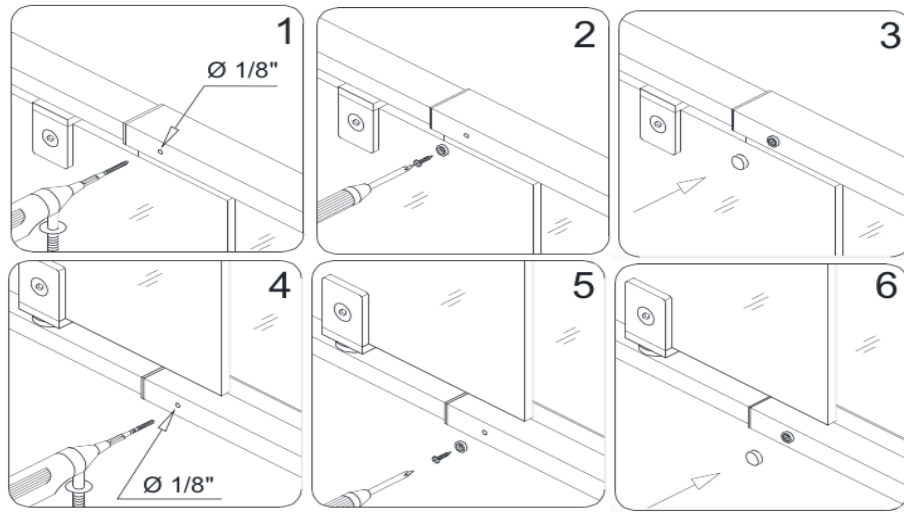
6. Make sure the **Door assembly (02)** is fully extended inside the **Wall profile (01)** and the **Corner profile (10)**. Adjust top and bottom Expanding rails to the same length. Use a tape measure for accuracy.



7. Drill holes in top and bottom Expanding rails through the predrilled holes using an  $\varnothing 1/8''$  drill bit.

**ATTENTION: Do not drill the Expanding rail throughout, only the first layer.**

Secure the Expanding rails using **Round head screws ST4.2×10 (04)** with the raised white washers. Cover exposed screw heads with **Decorative covers (06)**.



8. Do the final adjustments to the **Door assembly (02)** and **Return glass panel (09)** if required. Open and close the Glass door to make sure that the magnetic strips are fully attracted to each other. Drill holes into the aluminum profile of the **Door assembly** through the predrilled holes in the **Wall profile (01)** using an  $\varnothing 1/8''$  drill bit.

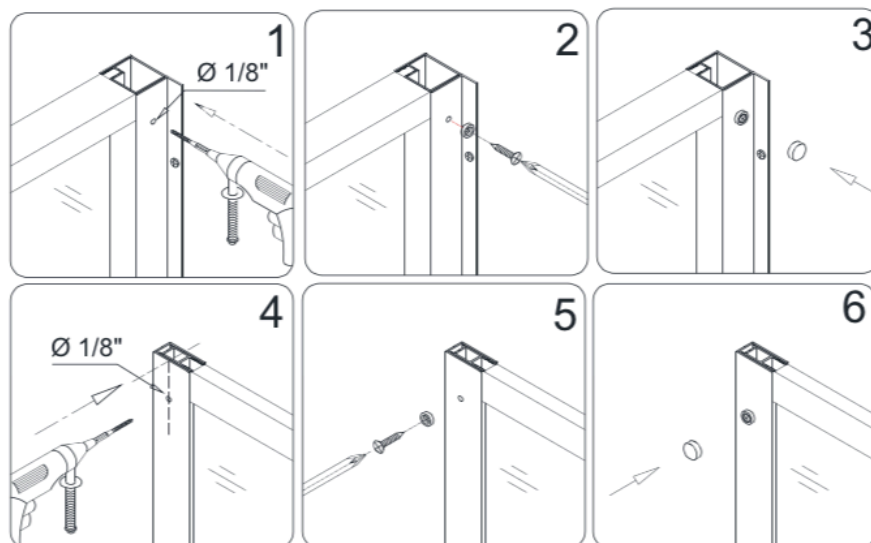
Drill holes into the aluminum profile of the **Return glass panel** through the predrilled holes in the **Return wall profile (11)** using an  $\varnothing 1/8''$  drill bit.

**ATTENTION: Do not drill the profiles throughout, only the first layer.**

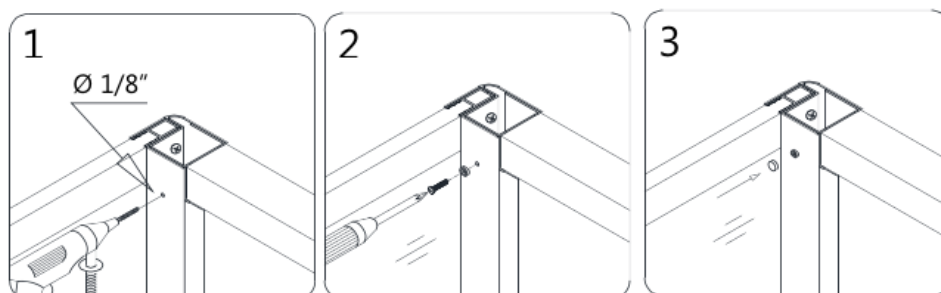
Secure the **Door assembly** and the **Return glass panel** inside the **Wall profile** and **Return wall profile** using the **Round head screws ST4.2×10 (04)** with the raised white washers.

Cover the exposed screw heads with the

**Decorative covers (06).**

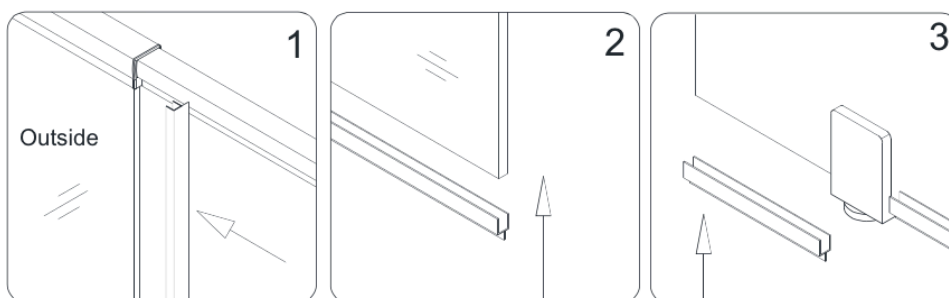


9. Drill holes into the aluminum profile of the **Door assembly (02)** through the predrilled holes in the **Corner profile (10)** using an **Ø 1/8" drill bit**. Secure the **Door assembly** inside the **Corner profile** using the **Round head screws ST4.2×10 (04)** with the raised white washers. Cover the exposed screw heads with the **Decorative covers (06)**.



10. Attach **Flanged Anti-water strip (07)** to the vertical edge of the Stationary glass. Cut **Bottom Anti-water strip (08)** in two pieces to cover the bottom edge of the door from pivot to both sides of the Glass door.

Attach both pieces of the **Bottom Anti-water strip** to the bottom edge of the Glass door.



11. Apply the silicone along the connection edges of the **Wall profile (01)**, **Return wall profile (11)**, bottom Expanding rail and the base of the **Return glass panel (09)** from both inside and outside the shower.

