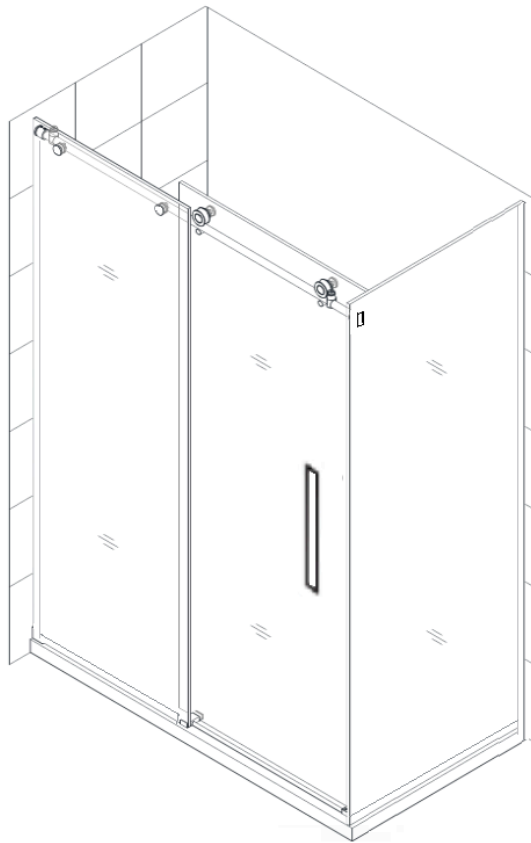


Lennox Shower Rock Series

INSTALLATION GUIDE



Model: RCM 1200/1500



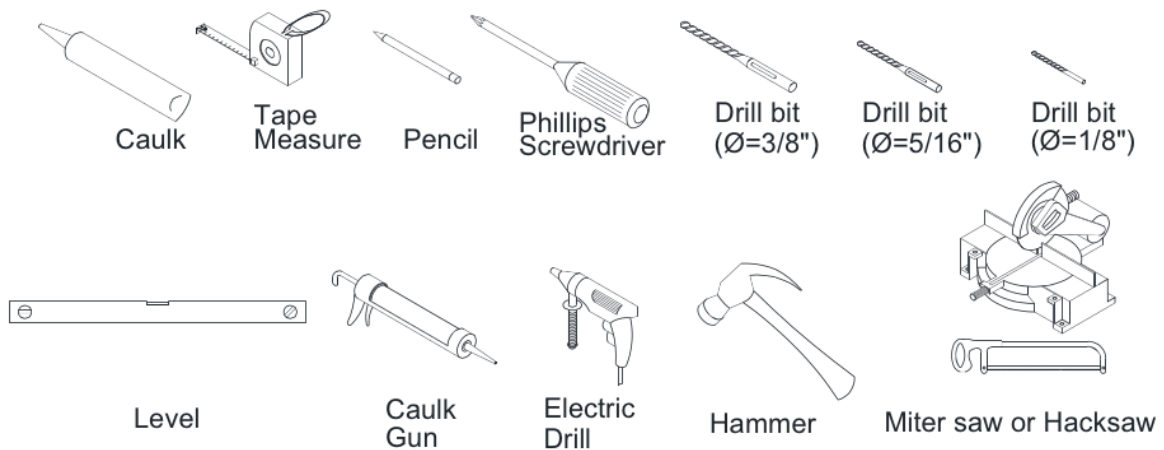
The Lennox™
Bathroom

Auckland Ph:09 2710168 Hamilton Ph:07 8477722
Christchurch Ph:03 3488885 Dunedin Ph:03 4775885
Online Order: www.lennoxbathroom.nz

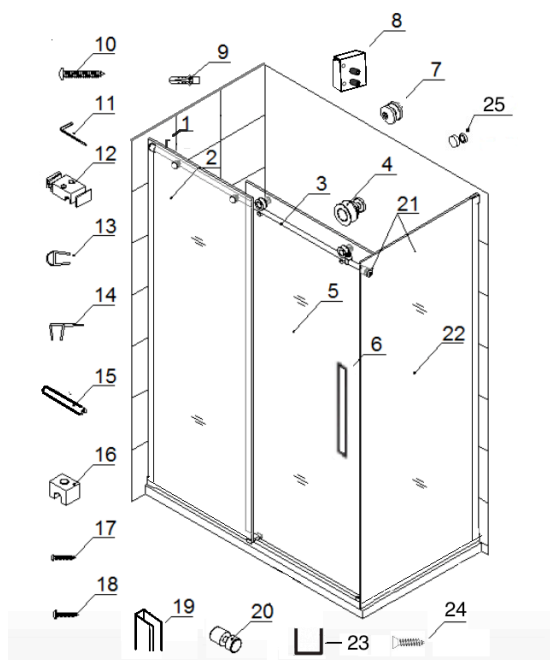
Preparation

1. After opening all boxes and packages, read this introduction carefully. Check that all of the needed parts are included in the package by marking all the components on the “Detailed Diagram of Shower Door Components”. Examine boxes and packages for shipping damage. If the unit has been damaged, has a finishing defect, or has missing parts, please contact us within 5 business days of the delivery date. Please note that **The Lennox™ will not replace any damaged products or missing parts free of charge after 5 business days or if the product has been installed.** Feel free to contact The Lennox™ if you have any questions.
2. Please ensure that prior to the installation surface is leveled and solid and will be able to support the total weight of the unit. Also make sure the walls are at right angles. Irregular installation surface level or improper angle of side walls will result in serious problems for your installation. Please, note that some adjustments and drilling might be necessary during the installation process.
3. This unit has to be installed against a finished floor and walls.
4. Install a shower base according to the Base installation manual. You should do it before the Gib board and finish wall installation. The shower enclosure has to be installed against the finished floor and finished walls.

Tools Required



Packing List



01	Door stopper	2pcs	13	Bumper strip	1pc
02	Stationary glass	1pc	14	Anti-water strip	2pcs
03	Upper Guide rail	1pc	15	Anti-splash threshold	1pc
04	Roller	2pcs	16	Threshold bracket (with plug)	1pc
05	Glass door	1pc	17	Round head screw ST4.2×25	4pcs
06	Handle	1pc	18	Round head screw ST4.2×15	6pcs
07	Glass bracket	2pcs	19	Aluminum wall frame	4pc
08	Guide rail bracket	2pcs	20	Roller guard	2pcs
09a	Wall anchor Ø 3/8"	1pc	21	Glass Connector	1pc
09b	Wall anchor Ø5/16"	3pcs	22	Return panel	1pc
10	Round head screw ST6×55	1pc	23	U channel	2pc
11	Allen keys	3pc	24	Flat head screw ST4.2X25	4pcs
12	Guide block (with plugs)	1pc	25	Decorative cover	6pcs

NOTE: Installation of Lennox Products MUSTBE carried out by a QUALIFIED TRADESPERSON.

Unpack your unit carefully and inspect it. Lay it out and identify all parts using parts diagram and part list in your manual as a reference. Before discarding the carton, check for small hardware bags that tend to fall to the bottom of the box. If any parts are damaged or missing, please contact The LennoxTM for replacement.

NOTE: Retain these installation instructions for future reference.

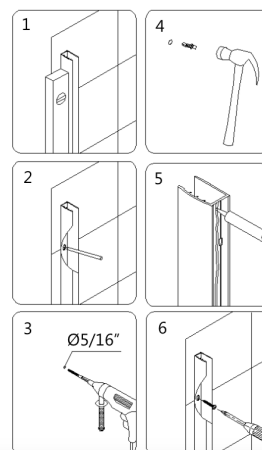
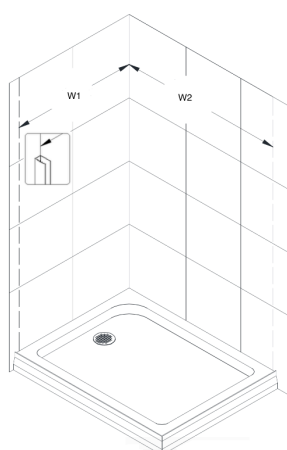
Shower Enclosure Installation

NOTICE: Please carefully read the instructions before installing.

The shower enclosure has to be installed against a finished floor and finished walls.

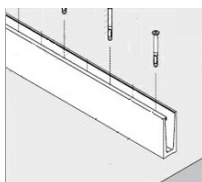
1. Draw the line on the wall according to your Shower Enclosure model size. Place the **Aluminum wall frame (19)** on the Shower base or threshold against the finished wall and level it vertically.

Model No.	W2
RCM1200A	1160
RCM1500A	1460
Model No.	W1
RCM800B	750
RCM900B	850
RCM1000B	950



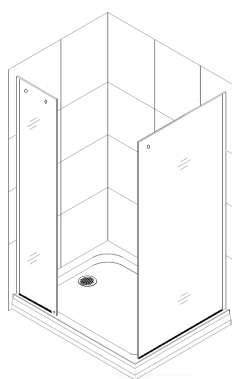
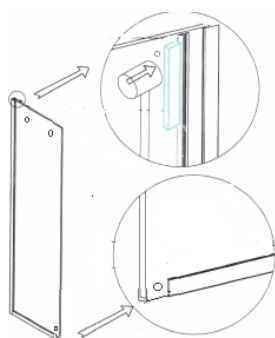
2. Assemble the **U Channel (23)** onto the tile base edge. Drill the holes in the tile base through the holes in the flange of the u channel. Fasten the u channel with the **flat head screw ST4.2×25 (24)**.

Note: If the U channel were not installed on the concrete floor, please directly use the silicone glue the U channel onto the base.



3. Slide the **Stationary glass (02,22)** assemblies into the groove of the Aluminum wall frame (19). At the same time plugged into the u channel.

Note: please put the clear silicone into the u channel before the glass sitting on.

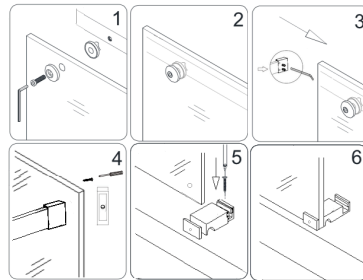


4. Install the **Upper guide rail (03)** to the **Stationary glass (02)** with the **Glass brackets (07)** and tighten the set screws. Slide the **Door stoppers (01)** on each end of the **Upper guide rail** and secure them temporarily. Slide the **Guide Rail brackets (08)** on each end of the **Upper guide rail** and temporarily secure them as well.

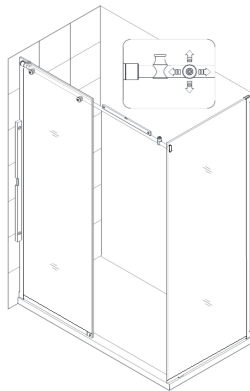
Place the **Stationary glass (02)** on the preinstalled shower base or threshold and butt it up against the wall. Temporarily fasten the **Upper Guide Rail (03)** to the **Return panel (22)**. Slightly tighten the set screws.

Place the **Guide Block (12)** on the shower base or the threshold and place the **Stationary glass (02)** back into the designated position so it gets in the groove of the **Guide block**.

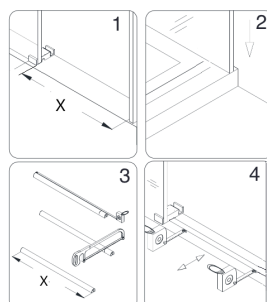
Fasten the **Guide block** and the **Threshold bracket** to the shower base or threshold with the **Round head screw ST4.2×25 (17)**.



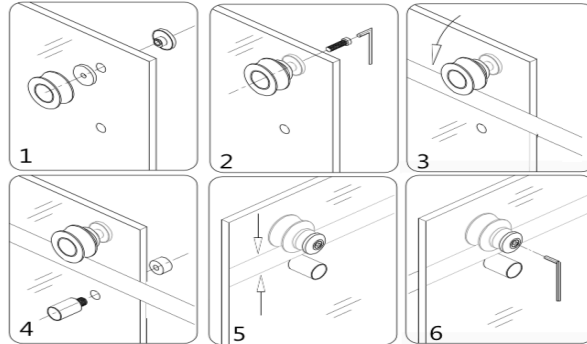
5. Make sure the **Stationary glass (02)** and the **Upper Guide rail (03)** are leveled and aligned with the shower base or the threshold. If a horizontal adjustment is required, adjust it in the **Glass brackets (07)**.



6. Parallel the **Stationary glass (02)** to the shower base or threshold. Measure the distance from the **Return panel** to the far edge of the **Guide block (12)**. This distance will be "**X**". Cut the **Anti-splash threshold (15)** to the size of X. Parallel the **Anti-splash threshold (15)** to the front edge of the shower base or threshold and glue it on.

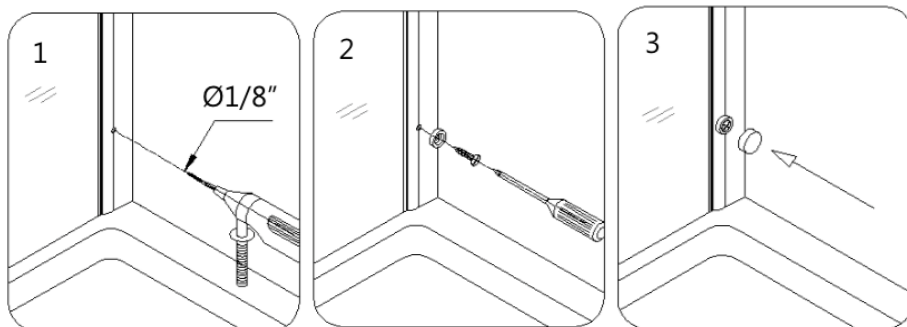


7. Attach two **Rollers (04)** to the **Glass door (05)**. Suspend the door by hanging the **Rollers** onto the **Upper guide rail (03)** and slide the bottom edge of the **Glass door** into the groove of the **Guide block (12)**. Adjust the fasteners on both rollers to ensure that the bottom edge of the glass door does not touch the bottom of the guide block. Then mount two **Roller guards (20)** on the door to secure the door to the **Upper guide rail**.



8. Drill holes on each aluminum wall frame, through the predrilled holes in the **wall frame (19)** into the first layer of the **Glass profiles (02)** using $\varnothing 1/8''$ drill bit.

Use the **Round head screws ST4.2×15 (18)** to secure the **Glass profiles** inside the **Wall profiles**. Cover the exposed screw heads with **Decorative covers (25)**.



9. Apply the sealant along the connection of the stationary glasses with the walls and the Shower base.

