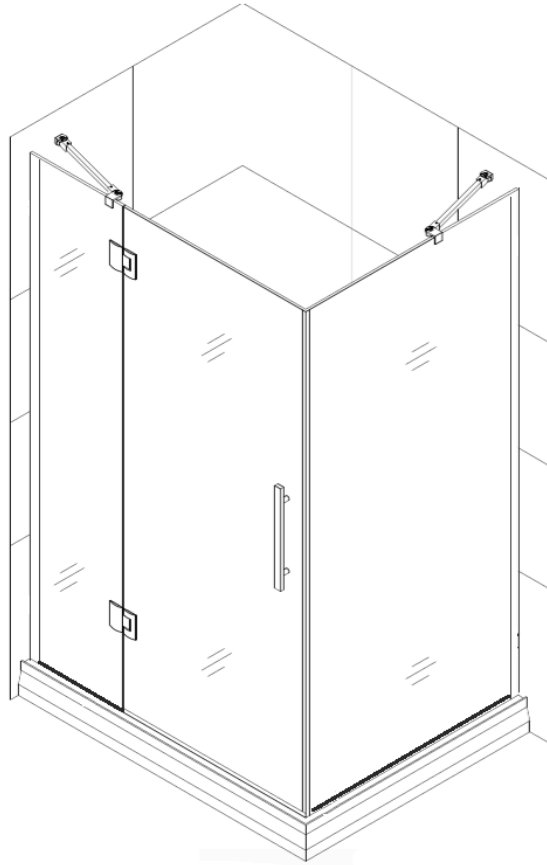


# Lennox Shower Stream Series

## INSTALLATION GUIDE



Model: SHO 800-1200



The Lennox™  
Bathroom

Auckland Ph:09 2710168      Hamilton Ph:07 8477722

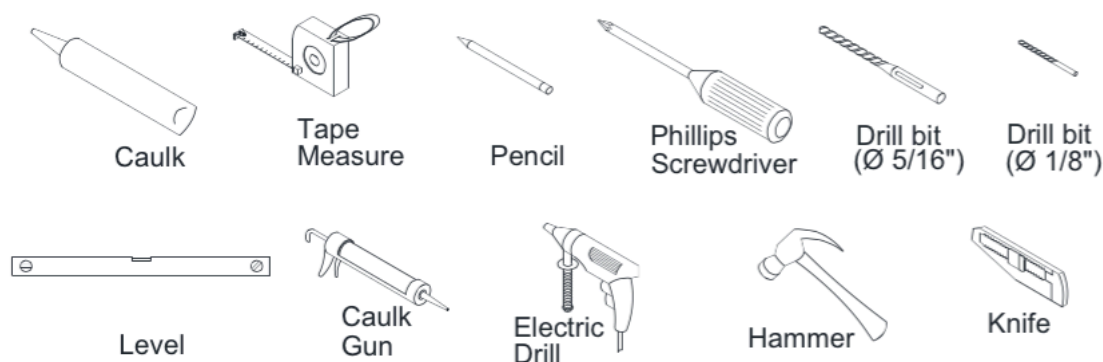
Christchurch Ph:03 3488885      Dunedin Ph:03 4775885

Online Order: [www.lennoxbathroom.nz](http://www.lennoxbathroom.nz)

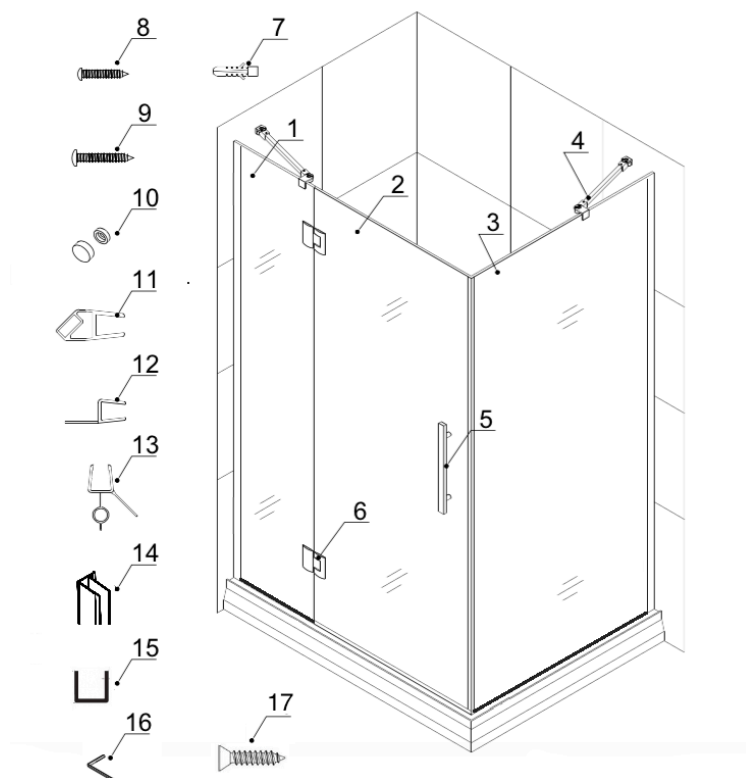
## Preparation

1. After opening all boxes and packages, read this introduction carefully. Check that all of the needed parts are included in the package by marking all the components on the “Detailed Diagram of Shower Door Components”. Examine boxes and packages for shipping damage. If the unit has been damaged, has a finishing defect, or has missing parts, please contact us within 5 business days of the delivery date. Please note that **The Lennox™ will not replace any damaged products or missing parts free of charge after 5 business days or if the product has been installed.** Feel free to contact The Lennox™ if you have any questions.
2. Please ensure that prior to the installation surface is leveled and solid and will be able to support the total weight of the unit. Also make sure the walls are at right angles. Irregular installation surface level or improper angle of side walls will result in serious problems for your installation. Please, note that some adjustments and drilling might be necessary during the installation process.
3. This unit has to be installed against a finished floor and walls.
4. Install a shower base according to the Base installation manual. You should do it before the wonder board and finish wall installation. The shower enclosure has to be installed against the finished floor and finished walls.

### Tools Required



## Packing List



01	Stationary glass1	1pcs	10	Decorative cover	6pc
02	Glass door	1pcs	11	Magnetic strip	2pcs
03	Stationary glass 2	1pc	12	Anti-water strip	1pcs
04	Support bar	2pc	13	Bottom anti-water strip	1pc
05	L shape handle	1pcs	14	Aluminum wall frame	2pc
06	Hinge	2pcs	15	U Channel	2pcs
07	Wall anchor	6pc	16	Allen key - hinges	1pc
08	Round head screw ST4.2X30	8pcs	17	Flat head screw ST4.2×25	4pcs
09	Round head screw ST4.2×15	6pcs			

**NOTE:** Installation of Lennox Products MUSTBE carried out by a QUALIFIED TRADESPERSON.

Unpack your unit carefully and inspect it. Lay it out and identify all parts using parts diagram and part list in your manual as a reference. Before discarding the carton, check for small hardware bags that tend to fall to the bottom of the box. If any parts are damaged or missing, please contact The Lennox<sup>TM</sup> for replacement.

**NOTE:** Retain these installation instructions for future reference.

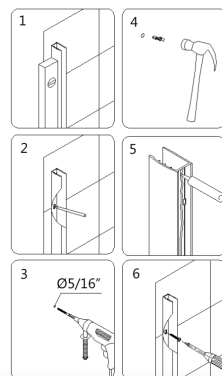
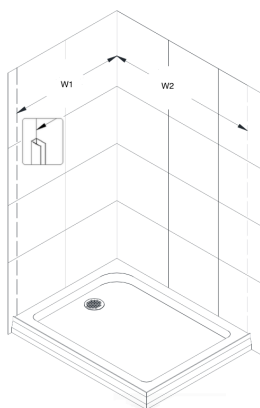
# Shower Enclosure Installation

**NOTICE: Please carefully read the instructions before installing.**

The shower enclosure has to be installed against a finished floor and finished walls.

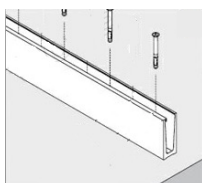
1. Draw the line on the wall according to your Shower Enclosure model size. Place the **Aluminum wall frame (14)** onto the Shower base or threshold against the finished wall and level it vertically.  
Model No: SHO 900 W1/W2 870mm. Model No: SHO1000 W1/W2 970mm.

Model No.	W1/W2
SHO800A/B	770
SHO850A/B	820
SHO900A/B	870
SHO950A/B	920
SHO1000A/B	970
SHO1100A/B	1070
SHO1200A/B	1170



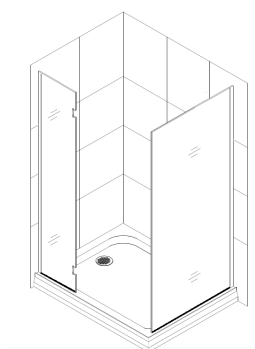
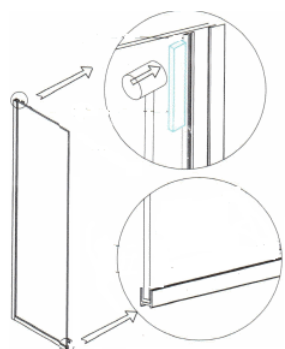
2. Assemble the **U Channel (15)** onto the tile base edge. Drill the holes in the tile base through the holes in the flange of the u channel. Fasten the u channel with the **flat head screw ST4.2×25 (17)**.

Note: If the U channel were not installed on the concrete floor, please directly use the silicone glue the U channel onto the base.



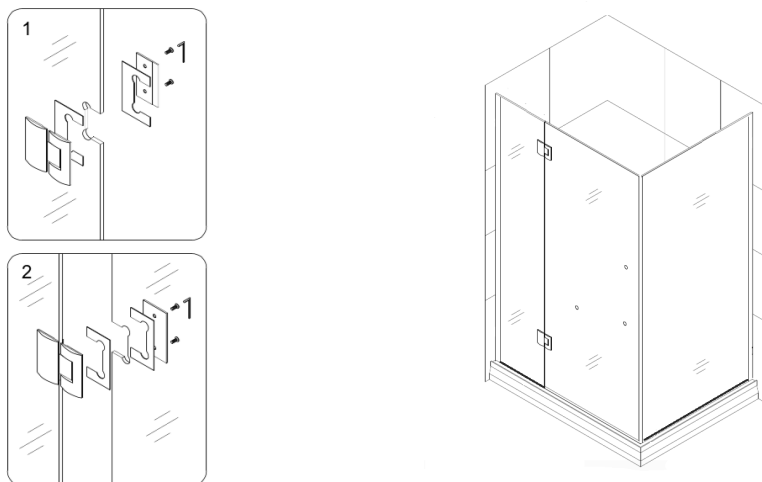
3. Slide the **Stationary glass (01,03)** assemblies into the groove of the Aluminum wall frame (15). At the same time plugged into the u channel.

Note: please put the clear silicone into the u channel before the glass sitting on.

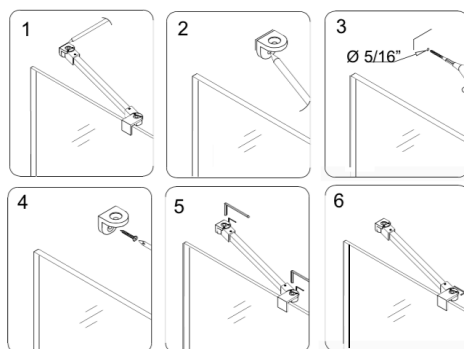


4. Attach the **Hinges (06)** to the **Stationary glass (01)** with the decorative bolts facing inside the shower. Bring the **Glass door (02)** into the Shower base between the two stationary glasses.

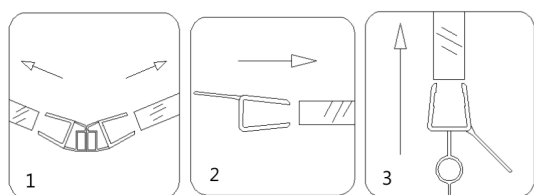
Level up the **Glass door** next to the **Stationary glass (03)** and fasten the **Hinges** on the **Glass Door** as well. Make sure the top edges of the **Glass door** and the **Stationary glasses** are aligned.



5. Locate the **Support bar (04)**. Adjust the bar to a proper position on the glass and the wall. Level it horizontally. Hold it firmly and outline the bracket's position on the wall. Remove the **Support bar** and detach the wall bracket from it. Place the wall bracket against its outlined position on the wall and mark the drilling hole. Drill the hole using **Ø 5/16"** drill bit, insert the **Wall anchor (07)** and fasten the wall bracket to the wall with the **Round head Screw ST4.2×30 (08)**. Attach the **Support bar** to the wall as shown on the following pic and tighten the set screws and the glass holding screw to secure the glass.

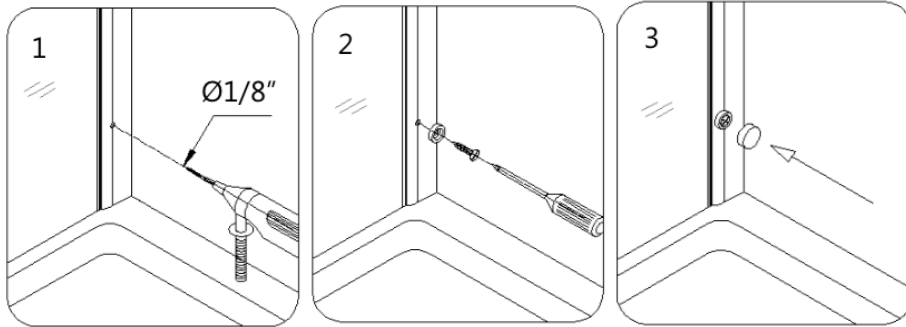


6. Push on the **Magnetic strips (11)** to seal between the **Glass door (042)** and the **Stationary glass (03)**. Install **Flanged anti-water strips (12)** and **Bottom anti- water strip (13)** on the door. Install **Handle (05)** on the door.



7. Drill holes on each aluminum wall frame, through the predrilled holes in the **wall frame (14)** into the first layer of the **Glass profiles (01)** using **Ø 1/8"** drill bit.

Use the **Round head screws ST4.2×15 (09)** to secure the **Glass profiles** inside the **Wall profiles**. Cover the exposed screw heads with **Decorative covers (10)**.



8. Apply the sealant along the connection of the stationary glasses with the walls and the Shower base.

